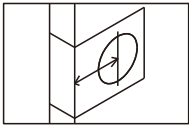
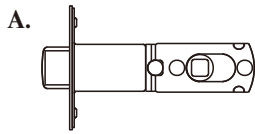


INSTRUCTIONS FOR INSTALLATION OF TUBULAR LEVERSETS

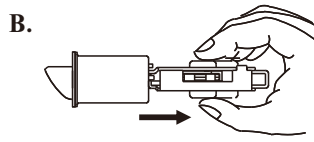
Latch Backset Adjustment



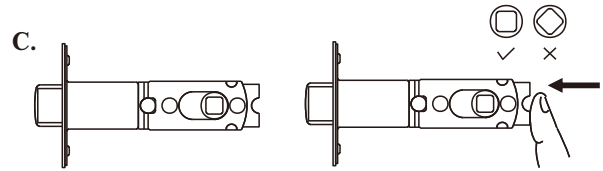
Backset is a distance from the door edge to the centre of the hole on door face. Some locks are supplied with adjustable latch which can fit 2-3/8" (60mm) or 2-3/4" (70mm) backset. Just follow the steps shown below to change backset.



a. This latch is set for 2-3/8" (60mm) backset.



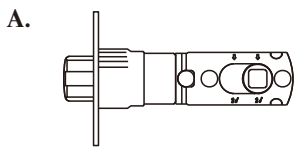
b. Keep spindle cam in correct position as illustrated. Pull spindle cam all the way to right.



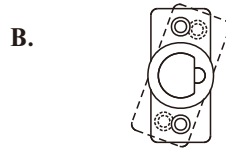
c. Your latch is now set for 2-3/4" (70mm) backset. To reset 2-3/8" (60mm) backset, just push spindle cam back to left side. Please make sure that the cams are staying with square shape.

Latch Face Plate

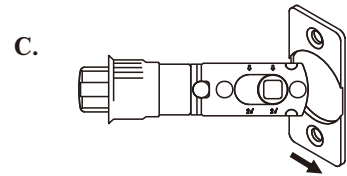
Some locks are supplied with 4-way latch which can fit mortise in or drive in.



a. This latch is for mortise in.

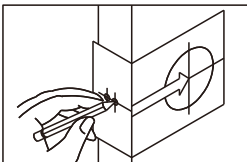


b. Rotate latch face clockwise 20° and pull out latch face.



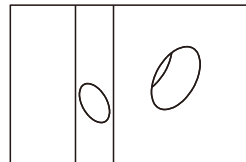
c. This latch is for drive in.

1. Mark Door with Template



- Start 36" (914mm) from floor, fold and apply template from floor, mark centre of door edge.
- Select 2-3/8" (60mm) or 2-3/4" (70mm) backset as desired and mark centre of hole on door face.

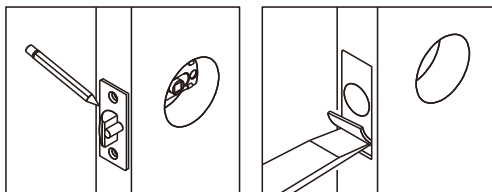
2. Drill Holes



- Drill 2-1/8" (54mm) hole on door face, from both sides to avoid wood splitting.
- Drill 1" (25.4mm) hole for latch. (refer step 3c for drive-in latch)

3. Install Latch

A.

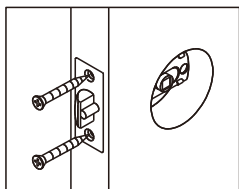


a. Insert latch in hole, mark outline of faceplate and chisel 5/32" (4mm) deep.

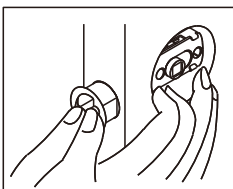
b. Insert latch and tighten screws.

c. For drive in latch, drill 31/32" (24.6mm) hole and press latch until it is flush with door edge.

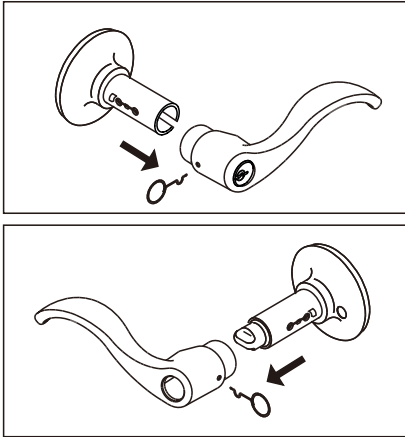
B.



C.

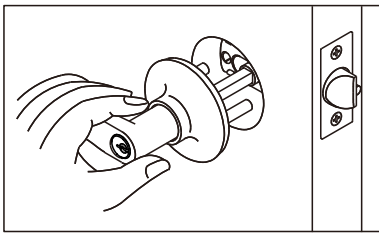


4. Reversible Levers



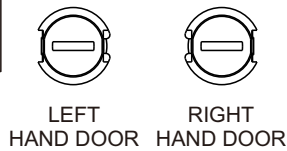
- a. Please check the levers are unlocked (Entrance sets only).
Depressing lever catch with hand tool to release outside lever and pulling lever off. Taking apart off the and cylinder from outside lever.
- b. Reversing the levers from outside to inside/inside to out side, putting the cylinder on the outside lever (Entrance sets only).
Please do the same procedures for inside lever.
- c. Pushing handles in until catch clicks. Make sure levers are retained by lever.

5. Install Outside Lever

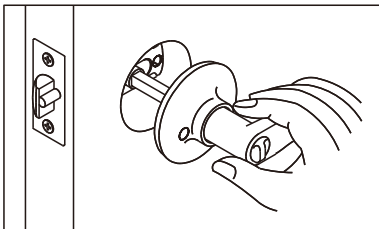


Insert spindle through latch. Press flush against door.

Handle can be only installed when the timing of "emergency release" is set in the position shown below.

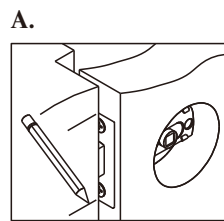


6. Install Inside Lever

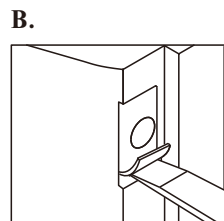


Install inside lever and tighten screws until lock is firm.

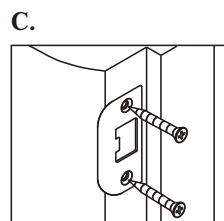
7. Install Strike



a. Close door to make horizontal centre line of strike.



b. Measure one half of door thickness from door stop and mark vertical centre line of strike. Drill 1" (25.4mm) hole 1/2" (13mm) deep at intersection of horizontal and vertical line of strike. Match screw holes on strike with centre lines on jamb. Mark outline and chisel 1/16" (1.6mm) deep for strike.

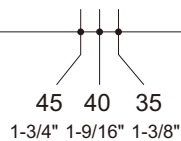


c. Install strike and tighten screws.

TEMPLATE

Fold on dotted line and fit on door edge

Fold on dotted line and fit on door edge



Make 1" (25.4mm) hole at center of door edge.

FOR BACKSET 70mm (2-3/4")

FOR BACKSET 60mm (2-3/8")

∅ 54mm (2-1/8")

5.5mm (7/32") x 2 hole for metal door only

2-1/4" (57mm)