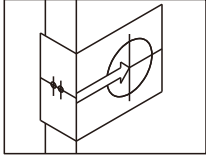


INSTRUCTIONS FOR INSTALLATION OF SINGLE AND DOUBLE CYLINDER DEADBOLTS

FOR USE ON DOORS 1-3/8" TO 1-3/4" (35mm~45mm) THICKNESS

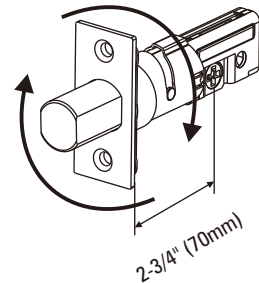
1. ADJUSTABLE LATCH FOR 2-3/8" (60mm) AND 2-3/4" (70mm) BACKSET



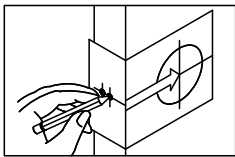
Backset is a distance from door edge to centre of hole on door face. Some locks are supplied with adjustable latch which can fit 2-3/8" (60mm) or 2-3/4" (70mm) backset. Just follow the steps shown below to change backset.

Latch Backset Adjustment :

To rotate the latch case as following illustration for backset 2-3/4" (70mm) or reverse direction for 2-3/8" (60mm).

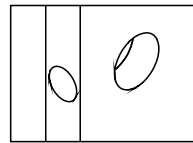


2. MARK DOOR WITH TEMPLATE



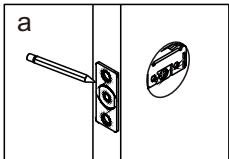
Select 2-3/8" or 2-3/4" (60mm or 70mm) backset as desired and mark centre of hole on door face.

3. DRILL HOLES

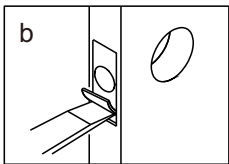


- a. Drill 2-1/8" (54mm) hole through door face, from both sides to avoid wood splitting.
- b. Drill 1" (25.4mm) hole for latch. (refer step 4c for drive-in latch)

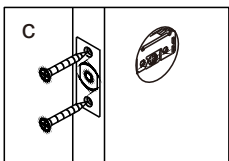
4. INSTALL LATCH



- a. Insert latch in hole and keep it parallel to door face. Mark outline of face plate and remove latch.

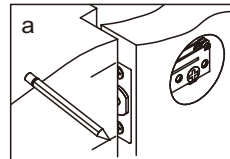


- b. Chisel 5/32" (4mm) deep or until face plate flush with door edge.

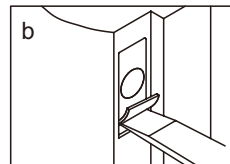


- c. Insert latch and tighten screw.

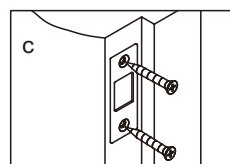
5. INSTALL STRIKE



- a. Close door to make horizontal center line of strike.



- b. Measure one half of door thickness from door stop and vertically mark center line of strike. Drill 1" (25.4mm) hole, 1" (25.4mm) deep at intersection of horizontal and vertical line of strike. Mark outline using strike plate and chisel 1/16" (1.6mm) deep for strike.



- c. Install strike and tighten screws.

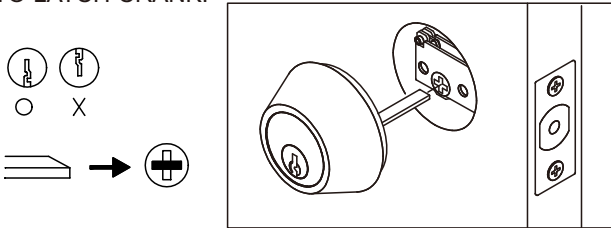
6. INSTALL EXTERIOR MECHANISM SINGLE CYLINDER

Press cylinder side flush against door making certain the tailpiece is properly positioned in latch crank.

Tapped holes in housing of exterior cylinder should be lined up with screw holes.

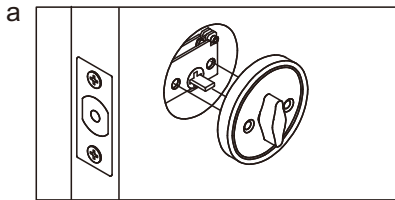
Key hole should be in down position.

TAILPIECE SHOULD BE HORIZONTALLY INSERTED INTO LATCH CRANK.

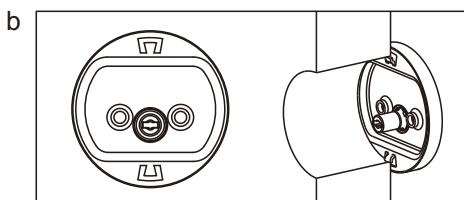


7. INSTALL INTERIOR MECHANISM SINGLE CYLINDER

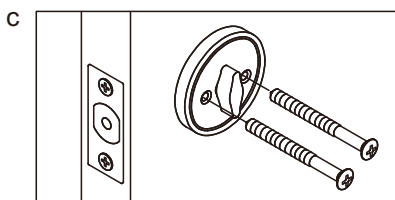
a. Slide turnpiece and interior rosette onto torque blade.



b. Make sure both of two flanges be put into the hole on the door face. Avoid both of two flanges drop out of the hole when fasten screws.



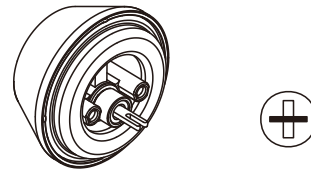
c. Insert machine screws through holes engaging holes in cylinder and tighten firmly.



8. INSTALL EXTERIOR CYLINDER DOUBLE CYLINDER

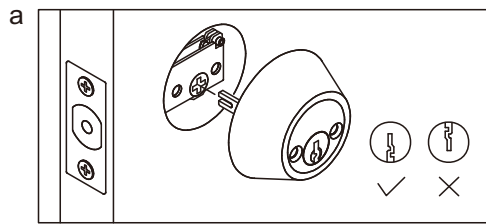
Press exterior cylinder flush against door.

Exterior tailpiece should be horizontally inserted into latch crankfirst.

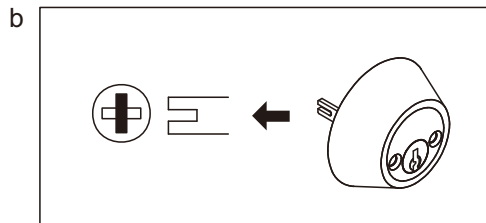


9. INSTALL INTERIOR CYLINDER DOUBLE CYLINDER

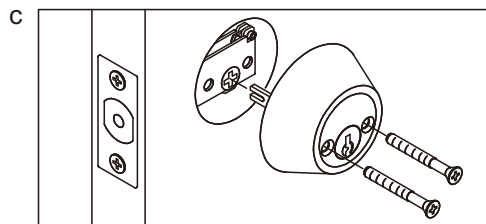
a. Press interior assembly flush against door, making certain the tailpiece is properly positioned in latch crank. Key hole should be in down position.



b. The interior tailpiece is inserted into the exterior blade.

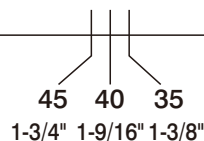


c. Insert two screws through countersunk holes engaging holes in exterior cylinder and tighten firmly.



TEMPLATE

Fold on dotted line and fit on door edge



Mark 1" (25.4mm) hole at center of door edge.

