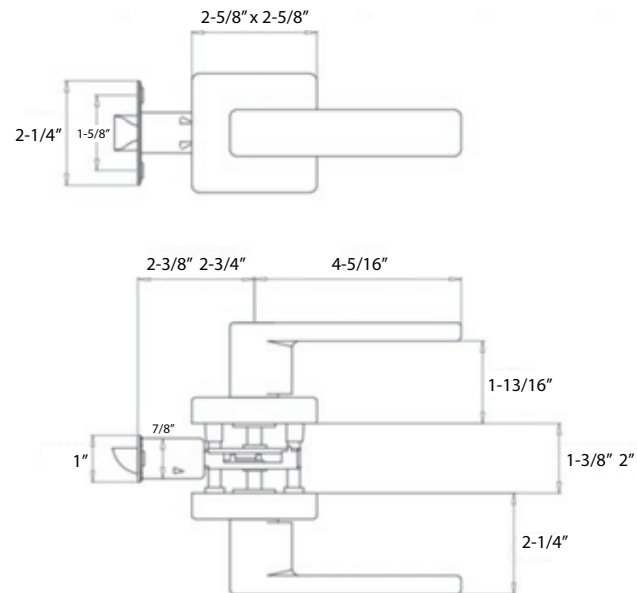
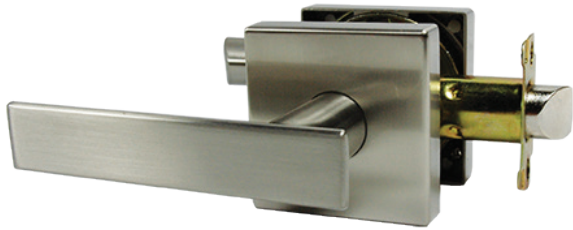


MaxGrade Hardware
Professional Grade Quality Locksets
Aberdine Lever Specifications



Quality and Value ... to the **MAX!**



Standard Features
Latch: 1" housing diameter, 1/2" throw
Backset: Adjustable 2-3/8" or 2-3/4"
Strike: 1-3/4" x 2-1/4" radius corner, full lip
Door Thickness: 1-3/8" - 1-3/4"
Door Prep: 2-1/8" bore
Lever Material: Zinc
Warranty: Lifetime mechanical and finish warranty
Available Finishes
Satin Nickel (15)

Aberdine Lever Functions	
100 Passage/Hall/Closet	Outside and inside knob/lever always unlocked
201 Privacy/Bed/Bath	Push pin locking on inside rose; Turning inside knob/lever releases push pin; May be unlocked from outside in an emergency
400 Dummy	Single dummy trim for one side of door. Used as a door pull