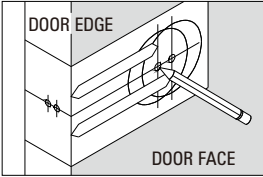


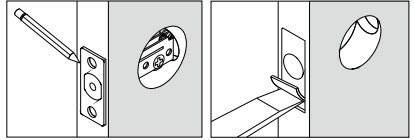
INSTRUCTIONS FOR INSTALLATION OF ONE SIDED DEADLOCK WITH 1" (25mm) DEADBOLT

1. MARK DOOR



Start approximately 36"(914mm) from floor. Fold and apply template on door edge and mark center of 1-3/4"(45mm) hole on door face.
(NOTE : BACKSET, 2-3/8"(60mm) or 2-3/4"(70mm), ON DOOR FACE MUST MATCH BACKSET OF YOUR LOCK.)

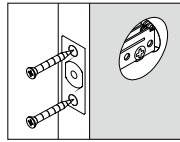
3. INSTALL DEADBOLT LATCH



Insert latch in hole, keeping latch face parallel to face of door edge.

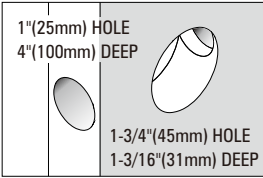
Chisel 1/8"(3mm) deep or until latch face is flush with door edge.

Mark outline and remove latch.



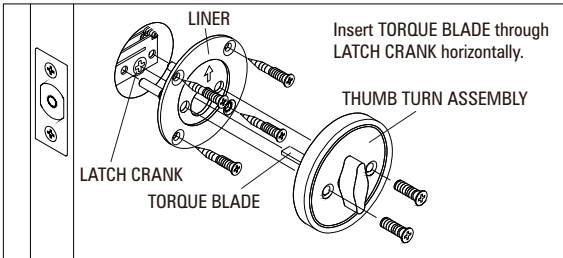
Install latch and tighten two screws firmly.

2. DRILL HOLES



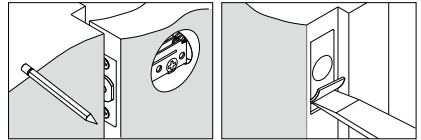
Drill 1"(25mm) hole 4"(100mm) deep in center of door edge. Drill from room side or inside of door 1-3/4"(45mm) hole 1-3/16"(31mm) deep on door face.
(NOTE : DO NOT DRILL MORE THAN 2-3/32"(53mm) DEEP. MAKE SURE NOT TO BREAK THROUGH TO OPPOSITE SIDE OF DOOR . DRILL JUST PASS 1"(25mm) HOLE FOR DEADBOLT LATCH.)

4. INSTALL THUMB TURN ASSEMBLY



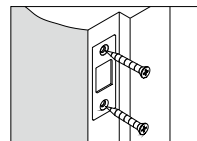
Fix 4 screws through LINER on inside of door at the position marked on TEMPLATE then fix 2 screws through THUMB TURN ASSEMBLY firmly.

5. INSTALL STRIKE PLATE



Close door until latchbolt touches jamb to locate strike in jamb and center line of strike. Open door and extend line from make to door stop.

Measure one half of door thickness from door stop and vertically make drill point center for strike. Drill 1"(25mm) hole 1" (25mm) deep in door jamb for strike.



Chisel 1/16"(1.5mm) deep for strike. Install and tighten screws.

FOR DOOR THICK 80mm TOOLS REQUIRED :

- 1 phillips head screwdriver
- 1 45mm hole saw
- 1 25mm drill bit
- 1 chisel

